



Birtley East School Times Weekly Newsletter

2025-26 | 23rd January 2026

Staff Update

We are looking forward to welcoming Mrs Nicholson back from maternity leave on Thursday next week. She will be taking over in year 4 once Mrs McGill starts her maternity leave. Until Mrs McGill starts her leave, likely to be around February half term. Mrs Nicholson will be spending time in year 4 working alongside Mrs McGill to make the hand over as smooth as possible. Mrs Nicholson will be working 4 days a week, Monday to Thursday. When Mrs McGill starts her maternity leave and Mrs Nicholpson takes over as year 4 teacher, Miss Pickersgill will be teaching year 4 on Fridays. From after half term, Mrs Proud will no longer teach in year 4 and will teach year 2 on Wednesdays, she will continue to teach in year 3 and in Early Years.

World Book Day

We will be meeting next week to agree on our World Book Day activities this year, this will be shared with you on next week's newsletter. In the meantime, to the right you can see the special menu which will be served on 5th March.

After-school Football Club

Just a reminder that we have a fantastic coach with a wealth of experience who comes in to run our after-school football club. It takes place on Tuesday night from 3:30pm-4:30pm. It is open to all of KS2 and is free of charge. There are some spaces still available, so if you are interested, please speak to the school office and your child can be added to the register. Children will need suitable trainers, shin pads and football kit to attend. After February half term, the children will be back outside on the field and can wear their football boots again if they have them.

Year 6 booster

Some children in Y6 will receive a letter next week about booster sessions that are invited to, outside of the normal school day, which will give them a little extra support leading up to their SATs tests. Your child will be invited if staff think they will benefit from it or need the extra support. Not all children will receive a letter but please keep an eye out for one. Any queries please speak to Mrs Small.

Reminder: INSET day closure

We will be closed for staff training on Friday 13th February.

Reminder: Forest School Club

There will be no Forest School club on Friday 6th February due to staff training

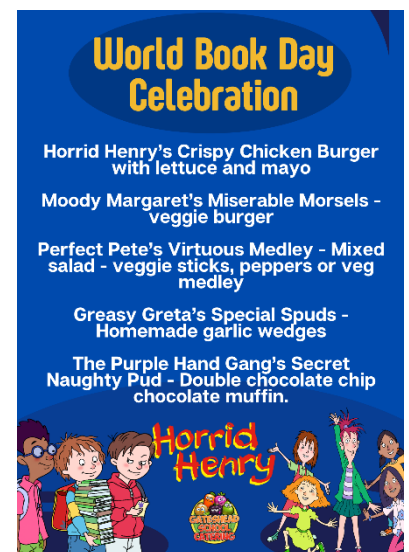
Childcare Provision

Children can now be in school from 7.45am to 6pm each day.

To register for **Breakfast Club** please email birtleyeastcommunityprimaryschool@gateshead.gov.uk

To register for **Wrap Around Provision after school** please complete this form: [After School Wrap Around Provision Registration Form - Fill in form](#)

Contact number for Wrap Around Provision after school office hours: 07734569973



Aiming Higher, Achievement for All





SEN Support for Parents

Whether you are awaiting a diagnosis for a child, or your child has received a diagnosis, it is perfectly natural for parents to worry and feel daunted by the process. The Rainbow Guide (linked below) provides a comprehensive **guide** for parents, directing you to the correct service for support in the local area.

<https://www.choicewellbeingsservice.org/gateshead>

You can also download the Rainbow Guide app to give you information about a range of SEN services:



Download

The Rainbow Guide app NOW via your app store, the one-stop guide to SEND services!



SEN IN SUNDERLAND | **Choice** WELLBEING SERVICE | **RAINBOW** Guide

